

MIF 8900



**MF Telescopic Handlers
Maximum productivity**

4 models: up to 3.5 tonne lift capacity




MASSEY FERGUSON

The Massey Ferguson 8900 Series is a range of high-specification Telescopic Handlers that features a unique combination of comfort, compact size, controllability, performance and productivity.

The Range:	MF 8925	MF 8926	MF 8947	MF 89410	MF 89410L
Lift capacity to full height	2500 kg	2200 kg	3000 kg	3500 kg	3500 kg
Maximum lift capacity	2500 kg	2500 kg	3500 kg	1000 kg	3000 kg
Maximum lift height	5.56 m	6.45 m	7.20 m	10.22 m	10.22 m
Maximum boom reach	3.12 m	4.10 m	4.06 m	6.40 m	6.40 m
Engine	4.4 litre Turbo	4.4 litre Turbo	4.4 litre Turbo	4.4 litre Turbo	4.4 litre Turbo
Power—*ISO hp (kW)	99 (74.5)	99 (74.5)	99 (74.5)	99 (74.5)	99 (74.5)

* ISO TR14396





Stand out from the crowd with precise control and power

Whether you're a livestock or arable farmer, in today's working environment you need reliable, productive machinery.

MF 8900 Series Telehandlers are built to work hard all day, keeping you comfortable and always in control.

For loading, transportation and easy handling on the farm, the MF 8900 Series is an excellent choice if you're looking for extra manoeuvrability.

Our telescopic handlers are a unique range of four high specification machines that feature an unmatched combination of compact size, control, performance and productivity.

With a powerful Perkins engine, comfortable, spacious cab and high performance hydraulics, the MF 8900 is packed with versatile new features that will make your working day more productive and less of a strain.

Exceptional comfort, control and productivity

The highest quality and output of work is always maintained with an MF 8900 Series Telehandler, thanks to the comfortable operator environment.

Comfort and output

The spacious, flat-floor cab has been designed to optimise day-long output. Both the seat and the steering column are fully adjustable, to ensure that every operator can achieve an ideal driving position. For added operator comfort and safety an optional pneumatic suspension seat offers a full range of adjustment to match the weight of the driver.

A large area of hi-visibility glass all round, combined with the low, angled boom location, ensures a good view. Even when the boom is raised, its geometry ensures that visibility through the right hand side window is virtually unrestricted.

Top-of-the-range features as standard

- Complies with all current ROPS and FOPS legislation
- Large mirrors, seat belt, rotating beacon, heater/demister, storage area behind seat
- Large adjustable sun visor
- Visual stability indicator with audible alarm



The pneumatic suspension seat is fully adjustable to suit the weight of the driver

To maximise productivity on hot days, air conditioning is among the options that can be specified.

The driver's window opens fully to give extra visibility and all MF 8900 Series Telehandlers comply with EU noise regulations.



Added safety

The overload indicator gives a clear audible and visual warning if load/reach limits are approached.

If safe operation is not re-established by the operator, then the system will automatically limit boom movement, avoiding any possibility of dangerous practice.



On the 89410L models with hydraulic frame levelling, an in-cab inclinometer indicates chassis-horizontality to aid safe operation



The dash-mounted overload indicator is clearly legible in all lighting conditions

Simply advanced features

Outstanding boom control

The multi-function joystick gives full proportional adjustment of all services from a single lever, giving easy, precise boom control.

Excellent boom and attachment carriage visibility means a fast hook-up and straight into work. The angled position of the boom gives a good 'digging depth' even with the boom fully retracted.

A hydraulic line to the front of the boom to operate hydraulic implements or hydraulic implement locking is fitted as standard.

The automatic parallel action of the boom ensures fast cycle times and is particularly useful for precise pallet and bale stacking.

The high lift capacity of the MF 8900's hydraulic boom arm with a versatile range of attachments



Simple, precise control

The range of MF Telehandlers are renowned for their simplicity. You won't find an easier telehandler on the market to operate. All cab controls are within easy reach and are simple to use.



Above: Coupling and uncoupling of hydraulic attachments is quick and simple

The MF range of Telehandlers has a load-holding capability so no need to equip all of your implements with individual load-holding valves.

It also features a standard pressure relief valve to make coupling and uncoupling of attachments a whole lot easier.

MF Telehandlers deliver high capacity to full height, at which point excellent reach is still achieved.



Our designers have made the features of the telescopic arm easy for you to control through a simple, multi-function joystick for the boom and attachments and a finger-tip lever for speed range and directional control



Infinitely variable gear ratios

The hydrostatic transmission gives smooth, continuously variable speed control... simply, at the touch of a lever and completely automatically within the two forward and two reverse speed ranges. Ratio changes can take place on the move and under full load, so there is never any loss of power or traction, and maximum productivity is achieved at all times.

The advanced hydrostatic transmission has two response modes giving either precise control when accuracy is needed, or fast response when handling bulk materials.

Safety is also enhanced, as there is full engine braking, giving safer operation on hillsides and when towing trailers on the road.

Chassis levelling

For stability, safety and accurate load placement at high lift heights, the MF 89410 is available with an optional hydraulic chassis levelling system. An inclinometer located in the cab provides visual confirmation that the chassis is horizontal on sloping terrain.



'Go-anywhere' Power with strength and durability

With four models to choose from, there is bound to be an MF 8900 Series Telehandler to meet your needs exactly.

From the astonishing performance of the compact MF 8925 to the huge reach of the MF 89410, each model has individual characteristics, but also a single high standard of design and build quality.

All models are based on a modern, monocoque chassis design, giving great advantages in terms of strength, serviceability and productivity, and as each model uses an advanced hydrostatic transmission, controllability and safety are unsurpassed.

Power is delivered smoothly and reliably by the highly successful Perkins 1000 series range of 4-cylinder turbocharged diesel engines. So power, torque and economy are second to none.

And when your livelihood is in agriculture, it's reassuring to know that the MF 8900 Series is supported by the comprehensive Massey Ferguson dealer and parts network.

Right: Powerful Perkins engine provides plenty of power and hydraulic capacity; access is excellent too!

Centre: The bellypan of the monocoque chassis is perfectly flat for use over rugged terrain without causing damage to the drive components.



Unique 'Fast/Slow' response mode

At the flick of a switch, operation of the hydrostatic pump can be set to either fast or slow response. In 'fast' response, the hydraulic pump reacts quickly to throttle changes; ideal for working in silage clamps or 'cycling' operations, such as grain hauling or loading, where the machine reaches maximum capacity quickly. In 'slow' response, pump flow increases more slowly and smoothly, so it is ideal for more delicate jobs such as pallet handling.

Inching pedal - total control

By pressing the inching pedal/brake pedal through a few degrees of travel the operator can gently and accurately control movement of the handler at any engine speed, whilst maintaining maximum pump output to the boom. Further movement of the inching pedal then operates the disc brakes, so heavy loads can be lifted whilst the handler is stationary or moving very slowly.



The inching pedal (above): initial movement of the brake pedal enables slow, controlled movement - even at full engine speed

Robust all-terrain underside

All MF 8900 Telehandlers feature a full, steel 'belly-plate' to provide drive-line protection in rough terrain and avoid crop wrapping around exposed shafts.



Hitches

In addition to the standard clevis hitch, an optional hydraulic hitch is available for fast trailer hook-up and improved transport cycle times.



Above: Double-acting rear hydraulic outlets and a hydraulic trailer braking facility may be specified to accompany the optional hydraulic hitch

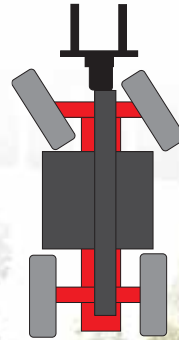
Designed to meet modern farming needs, MF 8900 Series Telehandlers offers a host of features to ensure maximum productivity.

From the compact but powerful MF 8925 to the massive capacity and reach of the MF 89410, all MF 8900 Telehandlers feature a tough yet modern chassis design.

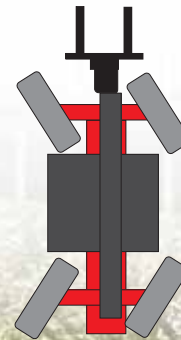
Optimum steering capability

All models have three selectable steering modes, two-wheel steer, four-wheel steer and crab-steer to provide optimum manoeuvrability in all operating conditions.

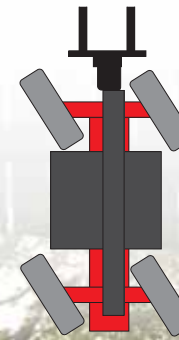
Two wheel steering mode - for road and high speed use



Four wheel steering mode - for minimum turning circles



Crab-steer mode - for efficient filling and grading and working alongside walls



Unbeatable hydraulics for maximum safety

A dedicated high capacity pump delivers fast boom operating speeds and, together with the multi-function proportional joystick, ensures that boom control is smooth and safe.

Optional steering modes for a range of applications



Quick and easy servicing for more uptime



Easy access to the air filter and engine for quick and efficient servicing



Below: Maintenance made easy - The boom is simple to remove for routine servicing of the wear pads



Servicing your MF Telehandler is easy. Well positioned service points means access is quick and simple

Side opening of the bonnet gives you wide open access to the engine, airfilter and cooling system as well as the air conditioning system, providing quick serviceability to all the major points.

From ground level, you can easily lift the hood to check the engine and radiator. All routine engine, hydraulic and transmission service points are easily located for fast and simple maintenance keeping downtime to a minimum.

Boom maintenance is minimised as the boom extension ram and pipework are protected by being located inside the boom as a sub-assembly, which can be easily removed for servicing. The extending section of the boom is also supported on replaceable nylon wear pads which are easily and externally adjustable using basic hand tools.



Versatile attachments for many applications



Bale spikes for precise bale handling



Bucket attachment for easy loading/unloading



A variety of bucket attachments are available



Grab and spike option for secure and easy carrying



Fork attachments for extra lift

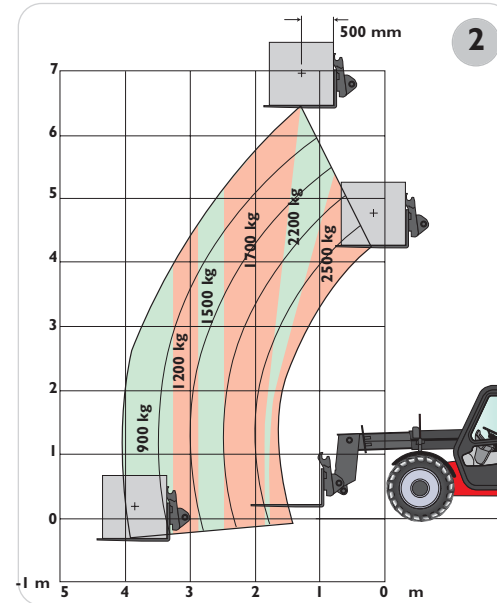
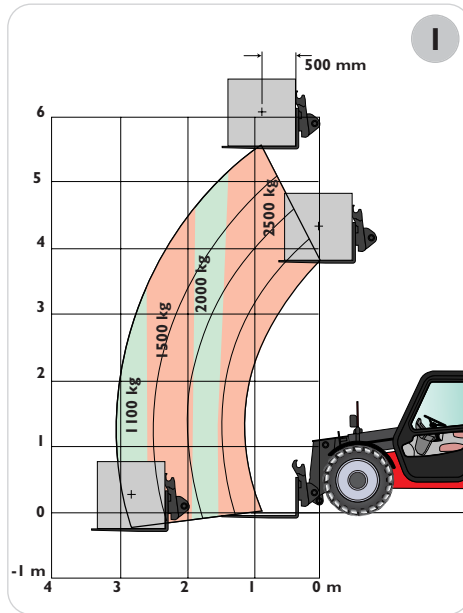


Transportation made easy!

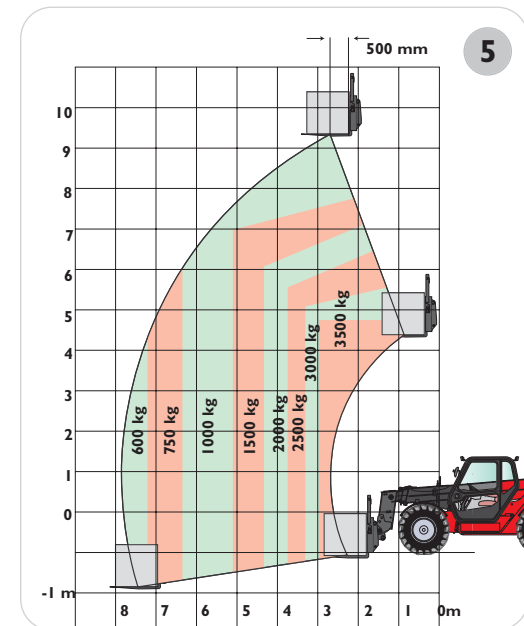
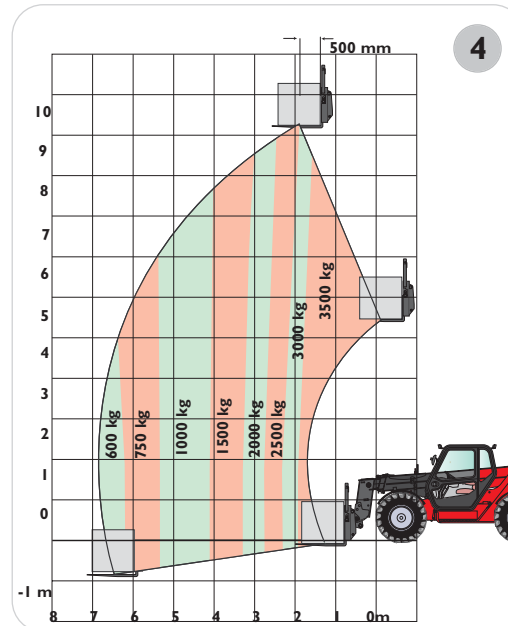
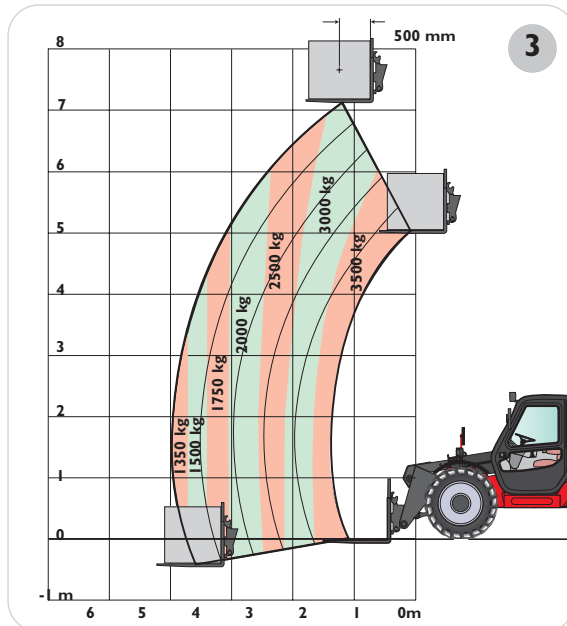


Outstanding boom design

1. MF 8925 Load Chart (400/70-20 tyres)
2. MF 8926 Load Chart (400/70-20 tyres)
3. MF 8947 Load Chart (400/80-24 tyres)
4. MF 89410L Load Chart (400/80-24 tyres)
5. MF 89410 Load Chart (400/80-24 tyres)



The load capacity illustrations clearly show that each model offers outstanding lift performance in its respective class





Design, testing and manufacturing

Massey Ferguson has a long tradition of innovation and engineering excellence. Based on continual questioning and analysis of farmers' needs, our products are designed, tested and built using the latest manufacturing techniques to enhance your productivity, efficiency and convenience.

World's largest distribution network

With a network of more than 5000 dealer outlets in over 140 countries, Massey Ferguson can claim to have the world's most comprehensive farm machinery distribution network, dedicated to providing local service of the highest calibre.

Financial support

Massey Ferguson retail finance schemes are widely available to help fund machinery purchase. With the emphasis on flexibility, these schemes are tailored to customers' specific business needs and to take account of cash flow and seasonal business cycles. Depending on the market, financial options include leasing, hire purchase, contract hire and loan facilities.

Every effort has been made to ensure that the information contained in this publication is as accurate and current as possible. However, inaccuracies, errors or omissions may occur and details of the specifications may be changed at any time without notice. Therefore, all specifications should be confirmed with your Massey Ferguson Dealer or Distributor prior to any purchase.



www.masseyferguson.com

